

RIGA
FACTS &
FIGURES
2015



TABLE OF CONTENTS

| | |
|------------------------------|----|
| 1. GENERAL INFORMATION | 1 |
| 2. ECONOMICS | 4 |
| 3. TERRITORY | 12 |

RIGA
FACTS &
FIGURES
2015

1. GENERAL INFORMATION

| | |
|--|---|
| Coordinates: | 56°56'51"N 24°6'23"E |
| Status of the city: | Since 1201 |
| Area: | 304 km ² |
| National currency: | Euro (EUR) |
| Time zone: | GMT+2 |
| Official web site of Riga City Municipality: | www.riga.lv ; www.investinriga.com |

Riga is the capital city of the Republic of Latvia; and it is located in the central part of Latvia on the south coast of the Gulf of Riga, on both riversides of Daugava. The city is the geographic centre of the Baltic region countries

Accessibility:



by plane –
from 83 cities all
over the world



by train –
from Russia,
Belorussia and
Estonia



by ferry –
from Germany
and Sweden



by bus –
from over 100
European cities

Population of Riga

| | |
|----------------------------------|---------------------------|
| Population (1 July 2014): | 701 977 |
| Males: | 313 143 (44,6 %) |
| Females: | 388 834 (55,4 %) |
| Population density: | 2 117 per km ² |
| Under working age : ¹ | 98 215 (14,0 %) |
| Working age: | 450 309 (64,1 %) |
| Post working age: | 153 453 (21,9 %) |

According to data on population, Riga is the largest city in the Baltic States and the third largest (behind Saint Petersburg and Stockholm) in the region of the Baltic Sea.

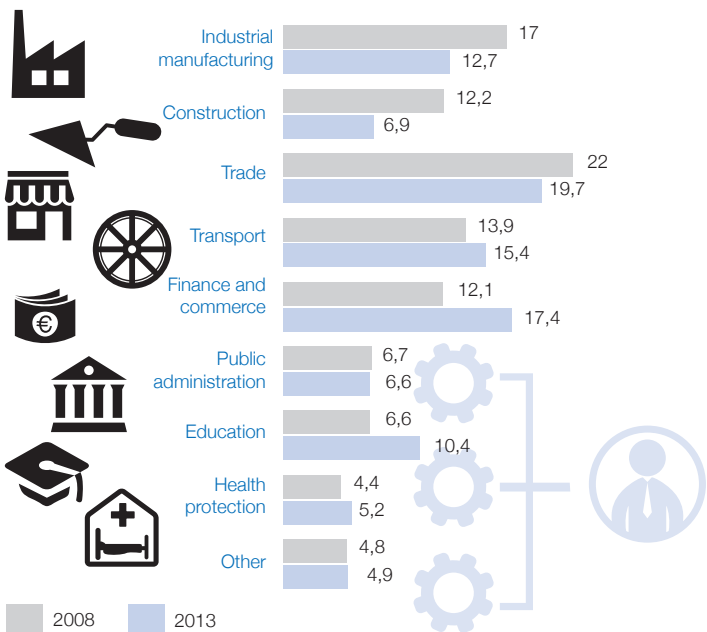
The proportion of different nationalities in Riga²



1 The Office of Citizenship and Migration Affairs. Working age and gender structure in municipalities. Available at: <http://www.pmlp.gov.lv>

2 The Office of Citizenship and Migration Affairs. Number of population in municipalities by nationalities. Available at: <http://www.pmlp.gov.lv>

Employment in Riga by economic activity sectors (% of total)³



The main planning documents of the city:

- The Sustainable Development Strategy of Riga 2030;
- The Riga Development Programme 2014 – 2020;
- The Riga Spatial Plan 2006 – 2018.

³ The Riga City Council Public Report 2013.

2. ECONOMICS

Key Economic Indicators

| | |
|--|--|
| GDP per capita ⁴ | By 58 % higher than average state GDP indicator |
| The main value-added sectors in the city's economic structure | Trade sector (19.3 %) Transport (11.9 %) Professional, scientific and technical services, administrative and service sector (9.8 %) Processing industry (9.7 %) |
| The amount of investments in Riga in 2013 (of total investments in the country) | 46 % |
| Non-financial investments (in comparable prices of 2012; million euro) | 2 192.4 |
| Accrued foreign direct investment in the share capital of the companies registered in Riga (in the first half of 2014) | 5.43 billion euro |
| Economically active entities in 2012 ⁵ | 64 859 |
| The unemployment rate in 2013 ⁶ | 5.6 % |
| Average monthly wage (euro) in public sector in the first half of 2014 ⁷ | 919 |
| Average monthly wage (euro) in private sector in the first half of 2014 | 818 |



4 The Riga City Council Public Report 2013.

5 The Central Statistical Bureau. Economically active statistical units. Available at: www.csb.gov.lv

6 The Riga City Council Public Report 2013.

7 The Central Statistical Bureau. Employees' average monthly wage. Available at: www.csb.gov.lv

Internationally the most competitive sectors of the city's economy:

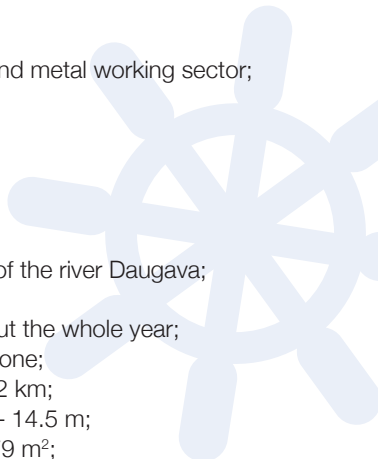
- Transport and storage sector;
- Manufacturing of wood and cork products;
- Production of food and beverages;
- Computer, electronic, electric and optical equipment production and information and communication technologies;
- Construction sector;
- Mechanical engineering and metal working sector;
- Tourism

Transport and Logistics

FREEPORT OF RIGA

Key facts and numbers:

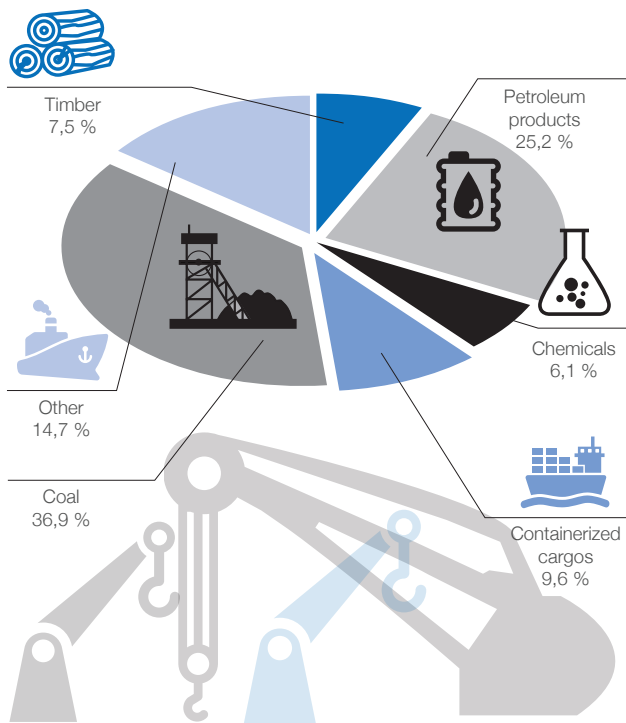
- 15 km along both banks of the river Daugava;
- Total area: 6 348 ha;
- Open for sailing throughout the whole year;
- Status of free economic zone;
- Total length of piers – 18.2 km;
- Maximum depth at piers – 14.5 m;
- Warehouse area – 370 979 m²;
- Cargo storage area capacity – 1 926 362 m²;
- Cargo handling capacity – 58.2 million tons/year;
- Freezer facility capacity – 25 500 t;
- Oil reservoir capacity – 665 063 m³;
- The largest port in the Baltic States in 2013 by cargo turnover – 35.5 million tons;
- Ship visits in 2013 – 3 850;
- Up to 77 % of cargo turnover in the Freeport of Riga consist of transit cargos sent to or received from the



Commonwealth of Independent States (CIS);

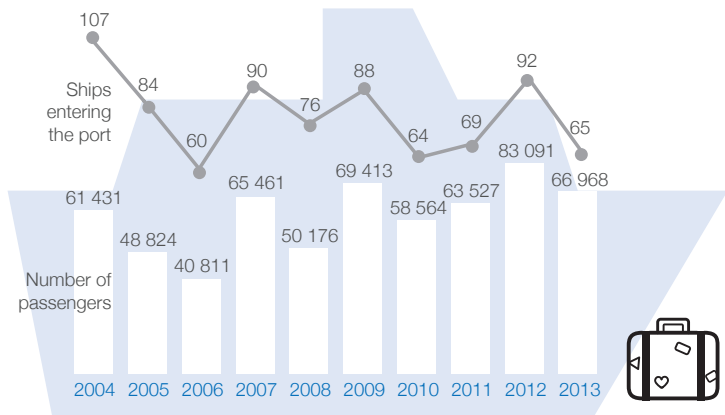
- 34 stevedoring companies and 27 shipping agents operate successfully in the Freeport of Riga;
- The main cargos are containers.⁸

The structure of transhipped cargo in January – August 2014

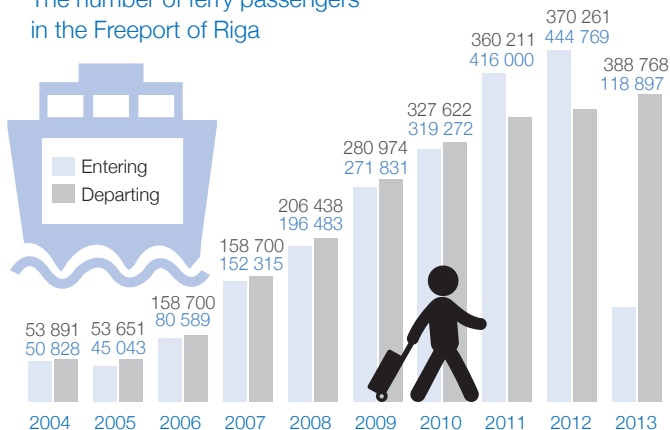


⁸ The Authority of Freeport of Riga. Available at: www.rop.lv

Number of entering cruise ships and passengers in the Freeport of Riga



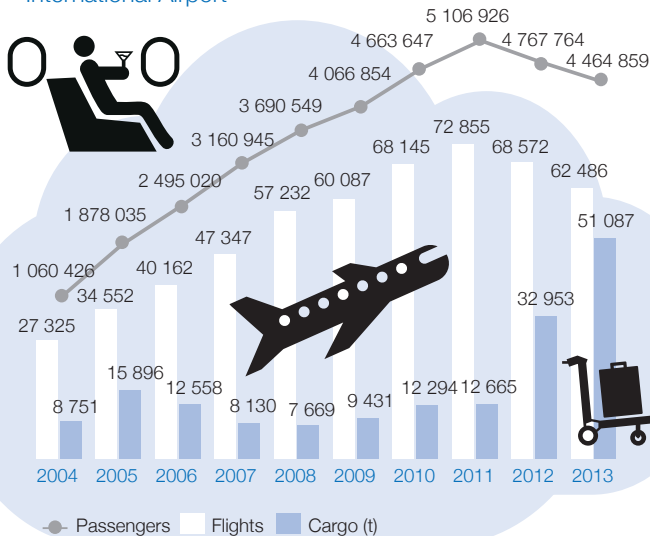
The number of ferry passengers in the Freeport of Riga



RIGA INTERNATIONAL AIRPORT

The most competitive airport in Europe in 2013 (according to the annual report of the Air Transport Research Society).⁹

Amount of cargo (t), passengers and flights in the Riga International Airport

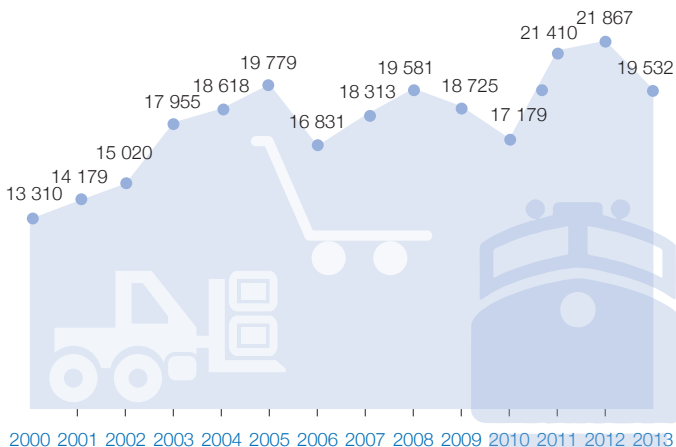


The average share of transit passengers – 9 %, the amount of transit/ transfer passengers – 36.8 %.

⁹ SJSC RIGA International Airport: www.riga-airport.com

LATVIAN RAILWAY

Railway connections with Russia, Belarus and Estonia.

Freight turnover in railway transport (million t/km)¹⁰The volume of transported freight (thousand tons):¹¹

| | Total | incl. via ports |
|------|--------|-----------------|
| 2009 | 53 679 | 45 117 |
| 2010 | 49 164 | 39 056 |
| 2011 | 59 385 | 47 738 |
| 2012 | 60 601 | 49 035 |
| 2013 | 55 831 | 45 240 |

¹⁰ The Central Statistical Bureau. Cargo transport by railroad. Available at: www.csb.gov.lv

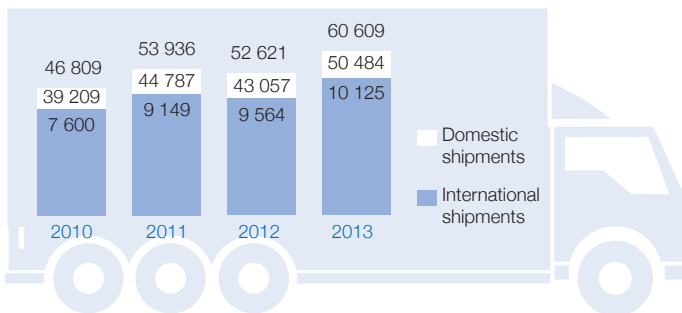
¹¹ SJSC "Latvijas dzelzceļš": www.ldz.lv

In 2013 the number of passenger in railway transportation reached 729 million passengers/km; that is four million passengers/km more than the previous year.¹²

Road freight transport

Road freight transport makes approximately 29 % of the total freight transport volume in the country and in 2013 more than 80 % of road freight transport was particularly domestic road transportations.

Road freight transport (thousand tons)¹³



Tourism

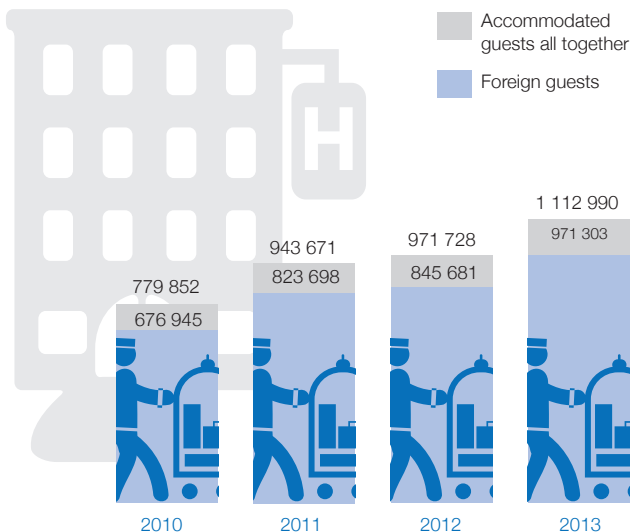
- Number of accommodation places: 1 115;
- Number of beds: 13 187;
- The occupancy of hotel beds: 64.1 %;
- In 2013 the majority of tourists came from Russia, Lithuania, Sweden, Estonia, Germany and Norway.¹⁴

¹² The Ministry of Transport of the Republic of Latvia. Passenger circulation of railway transport in the first quarter of 2014. Available at: www.sam.gov.lv

¹³ Central Statistical Bureau. Cargo transport by railroad. Available at: www.csb.gov.lv

¹⁴ The Central Statistics Bureau. Hotels and other accommodation places. Available at: www.csb.gov.lv

Number of tourists accommodated in hotels and other accommodation places in Riga 2009 - 2013¹⁵



The Riga Tourism Development Bureau, more commonly known by its tourism brand name “Live Riga”, is the main promoter and developer of the tourism in Riga. The Bureau works on promoting and marketing tourism possibilities of Riga abroad, bringing together almost 200 different companies and creating image of Riga as recognizable tourism destination.

¹⁵ The Central Statistics Bureau. Hotels and other accommodation places.
Available at: www.csb.gov.lv

Education¹⁶

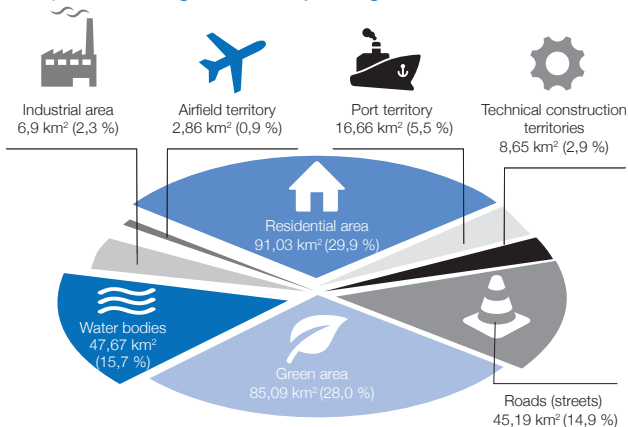
| | |
|----------------------------|--------|
| Universities and colleges | 46 |
| Number of students | 77 000 |
| Number of foreign students | 5 % |



3. TERRITORY

The environmental accessibility: 39 % natural landscapes, 16 % of them are water bodies and 23 % are green areas. The total green area of the city – 85.09 km².

The planned usage of territory of Riga¹⁷



¹⁶ The overview of the educational institutions in 2012/2013 school year. The Education, Culture and Sports Department of the Riga City Council. Available at: www.iksd.riga.lv

¹⁷ The Spatial Plan of Riga for 2006 – 2018 with amendments. Explanatory memorandum.



RIGA CITY COUNCIL CITY
DEVELOPMENT DEPARTMENT

Amatu street 4, Riga, LV-1050, Latvia

Telephone: +371 67012947

pad@riga.lv

www.rdpad.lv



@rdpad



RDPilsetasattistibasdepartaments

